



## Gator Roofing Equipment Manufacturer

All Gator Roofing Equipment Co. products are built by dedicated people who take pride in their work. From fabricating to welding and assembly, we put out a durable user friendly product. We strive to make your job safer, faster, and easier.



Phone 706-553-6015

Fax 706-553-6014

Any modifications without written authorization from Gator Roofing Equipment Co. will void all warranties. Prices and Specification subject to change without notice.

[www.gatorroofingequipment.com](http://www.gatorroofingequipment.com)

[www.gatorgenerator.com](http://www.gatorgenerator.com)

# GATOR ROOFING EQUIPMENT CO.

## ROOFING CONTRACTORS

## EQUIPMENT



Roof Cutters

Roofer Generators

## Manufactured in Woodbury Georgia

[www.gatorroofingequipment.com](http://www.gatorroofingequipment.com)

[www.gatorgenerator.com](http://www.gatorgenerator.com)

YouTube: Gator Roofing Equipment

150 Folk Ave. Woodbury Ga. 30293

706-553-6015

Since 1986

# Gator Roofing Equipment Co.



## ***Performance and Reliability Runs in our Family!***

Many of Gator Roofing Equipment Co. employees have been with the company since it began in 1986 as East Point Equipment Co., Inc. At Gator Roofing Equipment Co., there is an intentional effort made to avoid total assembly line style production. In most instances, the individual welder-fabricator is responsible for products from start to finish. This enhances job satisfaction as well as insuring a greater degree of quality control. Hand-built equipment for the roofing industry by Gator Roofing Equipment Co.



## **Warranty**

Products manufactured by GATOR Roofing Equipment Co., Inc. will be delivered to the user, of the kind and quality described in the order and shall be free of defects in workmanship and materials. Should any failure appear within 30 days from the delivery date to the user. User should make a notification that the goods have been stored, installed, maintained and operated in accordance with the manufacturer's recommendations, correct such defect by suitable repair or replacement.

Specifically excluded from the warranty are failures caused by misuse, neglect, abuse, alteration or modification. No liability shall result from delay in performance or nonperformance caused by circumstances beyond "GATOR ROOFING Equipment" control, including but not limited to acts of God, fire, flood, war, government action, accident or work stoppage. This is the only warranty on any GATOR Roofing Equipment written in the catalog. No other writing or description in the catalog shall be construed as a warranty.

## **Engines**

Read the instructions sent with each engine. Fill out the Warranty Sheet and place a copy in your file for future reference. If you have any questions or problems with your engine, contact your nearest Authorized Service Center to help you. If the engine is sent to GATOR Roofing Equipment Co. whether under warranty or not, we will take it to our local Authorized Service Center. You will be charged for the freight to and from Woodbury, GA, repairs (if not under warranty), plus a \$25.00 charge for handling.

## **Prices & Shipments**

All prices quoted are F.O.B. Woodbury, GA and subject to change without notice. All shipments are freight collect (except UPS shipment) unless arrangements are made prior to the shipment.

## **Returned Goods**

Goods should not be returned without authorization from GATOR Roofing Equipment Co. You will be given a return goods number that must be marked on all packages being returned. A restocking fee will be charged for handling (unless product is defective or faulty). **All items being returned must be prepaid.** If item was returned because of defect, credit will be issued for the freight. Shipments being returned without authorization will be refused.

# Leister Hot Air Tool Parts

Fast selling parts

We have heating elements in stock



Leister Blower Motors

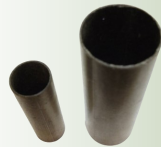
Leister gun location pin



Rubber Tires



Mica Tubes



Air dam belts



Handle Screw



Power Switch



Leister Handle



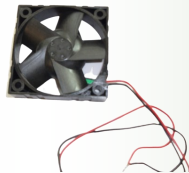
CPU boards



4 to 3 pin custom made plugs



Cooling fan



Air Filters



Leister gun cover



Post



# What's inside for Roofers

ROOF DECK PONY



TEAR-OFF MACHINE



ROOF CUTTERS



SWEEPER



ROOF



PACK MULE



WHEELBARROW



DUMP TRAILER



GATOR GENERATORS



GATOR KETTLE



GENERATOR PARTS



AC JACKS



# GATOR ROOFING EQUIPMENT CO.



## DECK PONY

MODEL: 308000

The Deck Pony is a one-of-a-kind tractor manufactured specifically with the roofer in mind. The Pony has a hydrostatic drive with foot controlled forward and reverse speeds. The top forward speed is 6 mph, while at lower speeds the Pony will creep along. The Pony has Honda engine, adjusting engine cover, rear hitch, push-button horn, parking brake, and a neutral lever for free-wheeling without the engine running. The most beneficial feature of this unit is that it has no belts, chains or sprockets! Less moving parts equals less down time.

## The Deck Pony Standard Specifications

- Honda 13HP vertical shaft engine with electric start
- Hydrostatic Transmission smooth forward and reverse
- Single attachment hitch that swivels 20 degrees
- 30 cu-ft. dump bucket
- Dump Bucket Capacity 1000 lbs.
- (4) 18X8.50-8 solid tires
- Weight 685 lbs. (Deck Pony & Tray complete)
- Rear hitch can tow roof top trailers

## Leister Hot Air Tools



The VARIMAT V2 has proven to be the best machine for overlap welding of PVC-P-, PE-, ECB-, EPDM-, CSPE- and TPO-roofing membranes. Width of welding seam 40 mm. Welding speed up to 39.4 ft/min. depending on material.



The new UNIROOF AT/ST roof welder is your flexible partner for welding thermoplastic roofing membranes on flat or pitched roofs up to 30°. Weld close to the edge, on the parapet, or close to obstacles thanks to the UNIROOF's slim design.

The TRIAC ST from Leister is primarily used for plastic welding and plastic fabrication. Case is included with each TRIAC tool. Our best in class TRIAC tool takes welding to the next level by providing top control, handling, and application of hot air for any plastic welding project



**55 Gallon HI-LO Hot Lugger**

HI-LO 55 gallon tank can be raised or lowered to desired height. Fully insulated drum two 400x8 flat free tires



The Deck Pony offers roofers much better control for pulling our 96" roof top trailer. The 96" trailer has an optional foldable lift gate. This lift gate keeps the operator safe when hauling bundles of iso skids. This unit will haul up to (4) skids of ISO and features a narrow 30" platform. This makes loading with crane slings easy and stable.



**Mop Cart**

The 30 Gallon Mop Cart is made from 14-gauge steel for durability. It has a no spill design for safety and comes standard w/ flat-free tires. This mop cart is very easy to maneuver over small walls and obstacles.



**Hot Asphalt Pipe: 5', 10', & 20'**

**XL Drop Trailer**



**Hi-Lift AC Jacks**



Hi-Lift Air Conditioner Jacks slide under a unit and raise up to 32" with drop leg jacks off the deck. The jacks are 6 ft. wide and can go to 10 ft. when extensions are used .

**User Controls**

**Tow hitch**



## Deck Pony Forklift Attachment



**MODEL: 308700**

Convert your Deck Pony into a High-Lift Forklift. This attachment is capable of lifting up to 800 pounds and has a 46" lifting height. The attachment can be installed with one pin and battery cable hookup. It features a short turning radius, both in forward and in reverse. This unit is a high performing attachment enabling the roofer to get the job done efficiently.



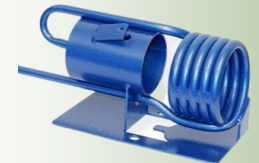
**Controls to lift & tilt without removing hands from steering handle**

## What's Inside the 650 Kettle



Diamond Shaped Flues deliver rapid heating due to the additional heating surface area. Engineered vat design with angled side walls this help keep more usable asphalt above the flues. Junction boxes are flanged ( flare ) to center all pipe joints. The flanged junctions allow for expansion and contraction that keeps welds from cracking.

Twin propane burners that can run on vapor or liquid propane. 1,000,000 BTU'S of power for the fast heating kettle



## Patch Pot

Gator 35 gallon patch pot will heat asphalt fast in this portable unit. It comes standard with a torch, regulator, thermometer, & 2" draincock.



## GATOR ROOFING KETTLES



**GATOR 650 Kettle**

### KETTLE SPECIFICATIONS

- 650 Gallon Pumper Kettle
- Usable Gallons – 495
- 35GPM Vican Asphalt Pump
- 9 HP Honda 6:1 gear engine
- LPG 25 foot 3/8 inch supply hose
- LPG Burner 1,000,000 BTU
- Draincock – 2 1/2" cast iron
- Stem Thermometer 4"
- Loading Height 50 inches
- DOT Axle Rating 5,200 LBS with brake
- 2-5/16 adjustable ball hitch
- DOT brake away switch with tail lights
- Tire Size 8ply 235-15 with 6 lug steel wheel
- Shipping Weight 3200 LBS

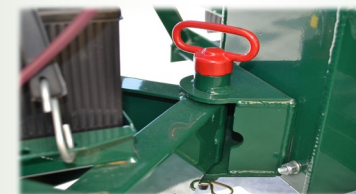


**Move materials on the ground or roof top!**



**72" Fork Extensions**

**Single Hitch Pin**



## ERASER TEAR-OFF MACHINE



MODEL: 306000

**ERASER Tear-off Machine removes old flat roofs faster and cleaner than other methods. This Tear-off roof peeler is equipped with an 18 inch dual-action cutting Blade (DACB) for better cutting and a slicing action. Unlike other tear-off equipment with a ramming action, the Gator DACB Eraser slices as it cuts through even the toughest flat roofs. It's quicker leaving you with less to clean up. The Eraser has less vibration and pounding that is common with ramming-action equipment and will give a far better service. The Eraser self-aligning steel cutting blade stays in contact with roof decks.**

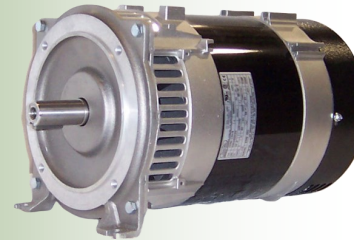
### The ERASER Standard Specifications

- Honda 13HP vertical shaft engine with electric start
- Oil level alert
- 18" Hardened Tool Steel Blade
- Hydrostatic Transmission for instant forward and reverse
- Variable speed control
- Hi-torque transaxle with solid rubber cleated tires
- 85" Long x 44" height x 30" wide

## Generator Parts & Accessories

### Basic Replacement Heads

- UL Listed
- Portable Replacements
- Self Aligning Units
- Voltage Variations
- Single Phase Brushless Capacitor Controlled
- All Copper Windings
- European Manufactured



### Generator Heads



### Power Cords



### Plugs



### Push Button 30 amp



### Generator Heads & Repair Parts

### Meters, Capacitors, & Controller



### GATOR steel welders tool box



### UL listed with GFCI Portable Power Center



## Bulldog Generator

Bulldog 16,000 WATT Standard with fully GFCI panel



Our best-selling Generator is capable of running two robot welders. This Generator is a must have for large jobs. It features a fully ground fault panel and all steel fuel tank. This unit is also easy to service with service parts that can be found at Kohler service centers nationwide.

<b>Model Number</b>	<b>406000</b>
<b>Max power</b>	<b>17,500 WATTS</b>
<b>Continuous power</b>	<b>16,000 WATTS</b>
<b>A.C. Output Voltage</b>	<b>120/240 VOLTS</b>
<b>Power Rating</b>	<b>60amps-240V/20amps-120</b>
<b>Engine Kohler</b>	<b>CH730</b>
<b>Displacement</b>	<b>730cc</b>
<b>Starting System</b>	<b>Electric</b>
<b>Fuel Tank Capacity</b>	<b>14 Gallons</b>
<b>Low Oil Protection</b>	<b>Standard</b>
<b>120 Volt Receptacles</b>	<b>8-20amp ground fault</b>
<b>120/240 Volt</b>	<b>30amp Twist-Lock 630-R</b>
<b>240 Volt</b>	<b>straight Blade 50amp</b>
<b>Dimensions</b>	<b>L42"X W28.5" X H39.5"</b>
<b>Weight</b>	<b>448 lbs.</b>



**We produce the best tear-off machine money can buy!**





## Gator Roof Cutter

**MODEL: 301000**

The Gator Roof Cutter is user friendly and great for all jobs large and small. It comes equipped with an 11hp Honda engine. Other features include a single lifting eye, cutting depth control, and floating blade cover . Weight 250lbs.



Honda Replacement Engines In Stock



## Sweeper

**MODEL: 305100**

The Gator 36" Roof Sweeper w/ Honda 9 HP has a hydrostatic driving system that is great for sweeping rocks to the right, left, or straight. It features a single forward and reverse control, poly-steel brush, and foam filled tires. Weight 417 lbs.

## Gator Generator

### HONDA Powered 12,000 Watts



Model Number	<b>404000</b>
Max power	12,500WATTS
Continuous power	11,500 WATTS
A.C. Output Voltage	120/240 VOLTS
Power Rating	50amps-240V/20amps-120
Engine Honda	GX 630
Displacement	688cc
Starting System	Electric
Fuel Tank Capacity	14 Gallons
Low Oil Protection	Standard
120 Volt GFCI	4-20 AMP
120/240 Volt	1-30amp Twist-Lock
240 volt	1-50amp straight blade plug
Dimensions	L42" X W28.5" X H39.5"
Weight	425 lbs.

### KOHLER Powered 14,000 Watts



Model Number	<b>405000</b>
Max power	15,000 WATTS
Continuous power	14,000 WATTS
A.C. Output Voltage	120/240 VOLTS
Power Rating	60amps240V/20amps-120
Engine Kohler	CH680
Displacement	674cc
Starting System	Electric
Fuel Tank Capacity	14 Gallons
Low Oil Protection	Standard
120 Volt Receptacles	8-20amp ground fault
120/240 Volt	30amp Twist-Lock

The Big Gator and Bulldog Generators have a 2 cylinder, 674cc air cooled Kohler gas engine. All welded steel frame, 14,000 or 16,000 watts of clean generator power, 14 gallon steel fuel tank. Included 1 -Yr or 1,000 hour gas engine limited warranty (whichever occurs first). Meets 50 state new EPA compliant standards.

**Gator generators have all copper wound heads with a clean wave form total harmonic distortion <5%. Units come equipped with multiple receptacles, easy rolling wheels, and lifting eye come as standard features. Absolutely the best value for your dollar! ROOFER TOUGH!**

**GATOR GENERATORS HAVE BECOME A NEW STANDARD FOR ROOFERS**

### **HONDA Powered 3,000 Watts**



Model Number	<b>401000</b>
Max power	3,000 WATTS
Continuous power	2,800 WATTS
A.C. Output Voltage	120 VOLTS
Engine Honda	GX 160
Displacement	163cc
Starting System	Recoil
Fuel Tank Capacity	3.3 Quarts
120 Volt Receptacles	2-20amp
Dimensions	L20"X W16" XH15"
Weight	72lbs.

**Gator D-BAR Generator is a light duty unit used mainly for hand tools.**

### **Honda Powered 10,000 Watts**



Model Number	<b>403000</b>
Max power	12,000 WATTS
Continuous power	10,000 WATTS
A.C. Output Voltage	120/240 VOLTS
Power Rating	30amps-240V/20amps-120
Engine Honda	GX 620
Displacement	688 cc
Starting System	electric
Fuel Tank Capacity	7 Gallons
Low Oil Protection	Standard
120 Volt Receptacles	4-20amp
120/240 Volt	30amp Twist-Lock 630-R
Dimensions	L42" X W28" X H39"
Weight	369 lbs.

\*Wheels Included\* Comes as pictured

**Gator 10,000 Generator has a 20 hp twin cylinder Honda gas engine. Our smallest power generator that will run robotic equipment (Leister) with a run time of 5 hours on a half load.**



### **Double Roof Cutter**

**MODEL: 303000**

**The Gator Double Roof Cutter has a hydrostatic drive system and is powered by a 25 HP Kohler engine. It is standard with double carbide blades and a heavy-duty all steel frame. With this unit, one man can cut 100 squares a day! Weight 595lbs.**



### **Spudder**

**MODEL: 304000**

**This heavy-duty rotary spudding machine is made for hard-to-do commercial jobs. It features a Honda 11HP engine, 14 "solid steel flywheel, (4) carbide teeth, and can spud a roof with ease. This labor saving spudder will cut a 14" path. Weight 270lbs.**



**XL Drop Trailer**

# GATOR GENERATORS



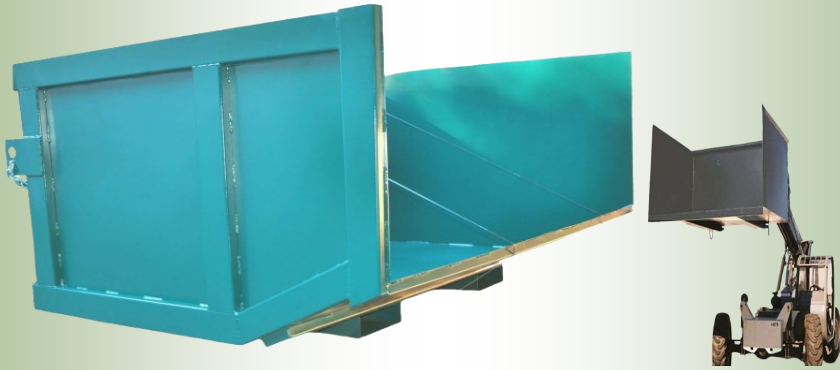
**ULTIMATE WELDING RIG**



**The ONLY oversized drop trailer in the roofing industry! This 96" towable 4-wheeled roof top trailer has a foldable gate. It can fold flat and be used as a regular roof-top trailer or it can be raised to haul up to (4) skids of ISO board insulation. Tow with our Deck Pony or pull by hand. This unit has a 1000 pound capacity and comes standard with 18x8.50x8 flat-free tires.**

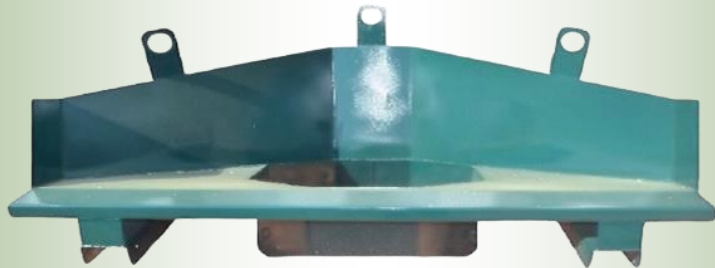
**EXCLUSIVELY @ Gator Roofing Equipment Co. —The Ultimate Welding Rig! A 72" drop trailer with a 16,000 watt generator, (2) steel tool boxes for robotic welders, and cord holders come equipped on this one-of-a-kind unit.**

Model Number	132000
<b>Specifications</b>	
Generator	16,000 WATT
Tool Boxes (ROBOT STYLE)	18" x 31"
Wheels	(4) 18x8.50 FF
Brake	Lever Style



### Lift Dumpster

The Telescopic Lift Dumpster is a perfect job-site material handler. Heavy-duty enough to be filled with job construction debris. This unit is made out of 10GA steel for a durable and long life. It is designed to work on telescopic forklifts for added safety on job sites. It comes equipped with forklift pockets and safety chains.



### Trash Hopper

The Roofing Trash Chute Hopper is used to set up trash chute systems. This hopper features eyelets for counter balance weights and can be set up on the job for fast trash disposal by wheelbarrow or power equipment.



### Drop Trailer

The Husky Hauler can carry up to 2,000 lbs. of material with ease. It features 18-8.50 tires that distributes a load evenly on the 30" bed. Optional length options are 60" or 72". This unit is made from 3/16"x 2" angle iron making it the most heavy-duty in the roofing industry.



### Side Dump Trailer

The Dump Trailer's heavy duty frame is made up of 3/16" x 2" angle iron. Large 18-8.50 tires come standard. The folding 6' foot long dump tray locks in the up or down position to allow for easy use. The dimensions are 72" long x 30" wide and has a 2,000 lb. capacity.

## Pallet Carrier



The Pac Mule can move large pallets of insulation easily by one man, just like giant hand trucks. Mover has 800 pound loading capacity, all steel, and with flat-free tires.

## Wheelbarrow



The Gator dual wheel Wheelbarrow has a 6-cu.-ft. tray, heavy steel long tubular handles, flat free tires, and low bumper for better dumping balance. This unit also comes equipped with a 1" axle and the wheels mounted underneath the tray, creating one of the best built wheelbarrows in any industry.

## Wheeled Tear-Off Bar



The Wheeled Tear-Off Bar is designed for fast removal of old roof and insulation. Unit is built to tear off old roof with ease—slide under roofing and press down on handles. All steel Made with steel wheels for long life and a hardened steel, replaceable cutting blade.

## Roofer Smart Cart



The Gator Roofer Smart Cart is 14 gauge welded steel and has a heavy-duty tray, 12.6-cu.-ft. tray. It features dual wheels well balanced to handle the heaviest loads without collapsing. Offering the same performance as our dual wheeled wheelbarrow but with larger all steel tray